



LANCASTER COUNTY CONSERVATION DISTRICT

House Agriculture and Rural Affairs Committee

November 20, 2019

Conserving Natural Resources for Our Future

Conservation Ethic In Pennsylvania

- **On May 15, 1945 Act 217
Conservation District Law**
- **June 22, 1937 Act 394 The
Clean Streams Law**



Conservation Ethic In Pennsylvania



The first conservation “law” in Pennsylvania was established 1681.

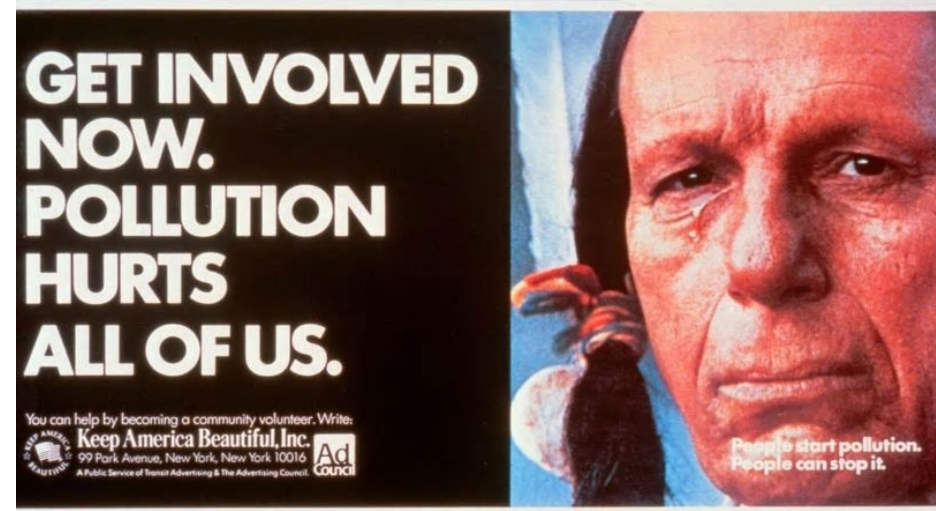
As William Penn began making plans to settle his newly acquired land, deeded to him by King Charles the II, he required purchasers of land to sign an agreement to preserve one acre of trees for every five acres of land they cleared.



Drivers for Conservation



1960-1970 Drivers for Conservation



Conservation Ethic In Pennsylvania

- On May 15, 1945 Act 217
Conservation District Law
- June 22, 1937 Act 394 The
Clean Streams Law
- 1971 Pennsylvania
Constitution. Article I, Section 27
*“The people have a right to clean air,
pure water, and to the preservation
of the natural, scenic, historic and
esthetic values of the environment.”*



Lancaster County Conservation District

The Mission of Lancaster County Conservation District is:

“To promote the stewardship of our county’s land, water, and other natural resources and to provide financial and technical assistance to those who want to implement programs which accomplish this mission”



Lancaster County Conservation District



Professional Staff of 34 Administering Five Main Programs

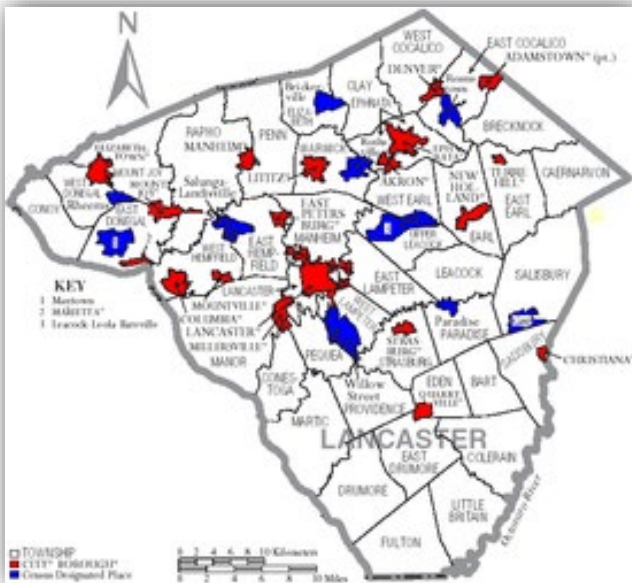
- Agriculture Stewardship
- Erosion and Sedimentation Control
 - Watershed Conservation
- Conservation Education & Outreach
- Clean Water Partner Coordinator



Lancaster County Conservation District

2020 County Statistics & Services

- 625,000 Acres
- 63 Municipalities
- 16 School Districts
- 12 Major Watersheds
- Strong Commercial & Industrial Sectors
- Developing Agriculture Production & Markets
- Growing Population



Municipal Support

2020 County Statistics & Services

63 Municipalities

- Endorsed MOU with each.
- Provide technical assistance.
- Facilitate grant projects



Environmental Education & Outreach



2020 County Statistics & Services

- 16 public school districts in the County:
- 143 Public and Private schools
(includes plain sect, charter, etc.)
- 66,594 students



Environmental Education & Outreach

2020 County Statistics & Services

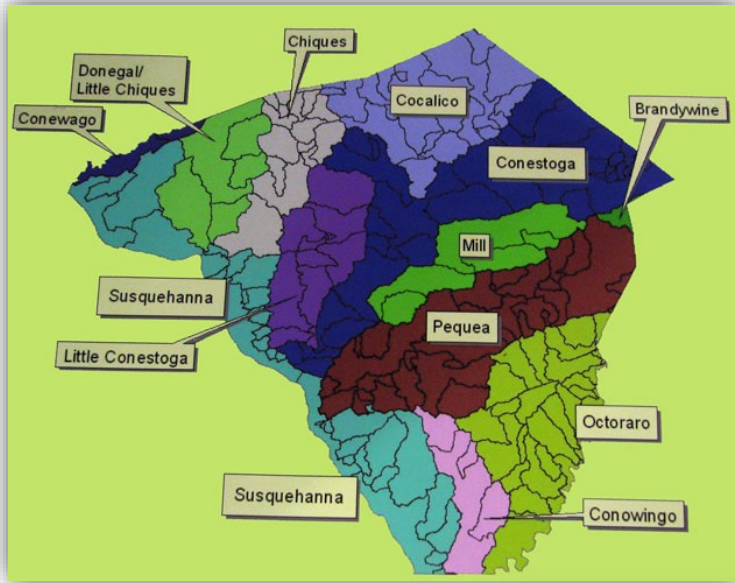
- 16 public school districts in the County:
- 143 Public and Private schools
(includes plain sect, charter, etc.)
- 66,594 students

Conservation Education - Classroom sessions, Youth Conservation School, Envirothon, Community and Train the Trainer events

- Active Presence in 46 public schools
- Reaching more than 7,750 students... greater than 10%.
- 177 learning sessions to general public, residents, private schools, groups and organizations.



Watershed Specialist Program



2020 County Statistics & Services

- 12 Major Watersheds
- 1,400 miles of Streams.
 - Nearly ½ are listed as impaired.



Watershed Specialist Program



2020 County Statistics & Services

- 12 Major Watersheds
- 1,400 miles of Streams.
 - Nearly ½ are listed as impaired.

Watershed Specialist - Works to improve the quality and quantity of the county's surface and groundwater resources by providing technical, financial and organizational assistance. In 2018:

- 12 Active Watershed groups.
- 7 Stream projects totaling over 8,000 linear ft. and \$757,000 of stream work.
- Dirt & Gravel Road Program
 - Complete 9 D&G and 18 LVR projects totaling more than \$844,000.



Erosion & Sedimentation Control Program



2020 County Statistics & Services

Strong Commercial & Industrial Sectors

- 47,876 Commercial & Industrial Firms
 - Rock Litz, Lime Springs, Belmont
- Pipelines, Processing Plants & Transport



Erosion & Sedimentation Control Program



2020 County Statistics & Services

Strong Commercial & Industrial Sectors

- 47,876 Commercial & Industrial Firms
 - Rock Lititz, Lime Springs, Belmont
- Pipelines, Processing Plants & Transport

- **Erosion & Sedimentation Control -**

Activities relative to new construction projects are required to utilize Best Management Practices (BMPs) to minimize negative impacts to the water quality.

- 750 Active work sites annually.
- Working with 30 builders, 76 excavators, 60 consultants.
- Atlantic Sun Rise Pipeline 59% complete
 - Gas is flowing all work by spring 2019.



Agriculture Support & Services



2020 County Statistics & Services

Agriculture Production & Markets

- 68% of the land is farmed
- 5,462 Farms
 - \$1.07 Billion in direct sales.
 - \$7 Billion extrapolated sales.



Agriculture Support & Services



2020 County Statistics & Services

Agriculture Production & Markets

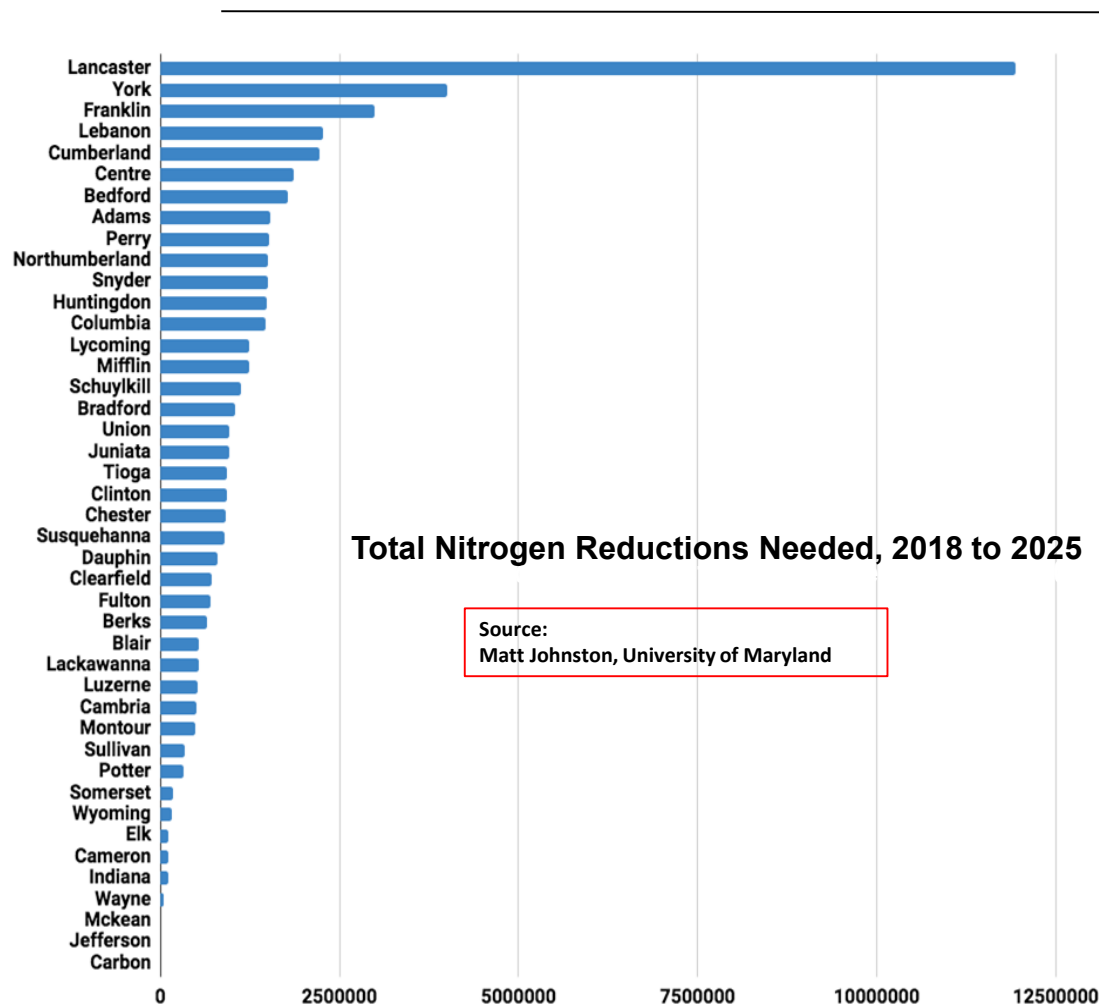
- 68% of the land is farmed
- 5,462 Farms
 - \$1.07 Billion in direct sales.
 - \$7 Billion extrapolated sales

Agricultural Technical Team – Works with conservation partnerships to provide landowners with information on Nutrient Management, Conservation Planning, Best Management Practices & Technical Assistance, as well as Funding Resources to install conservation practices.



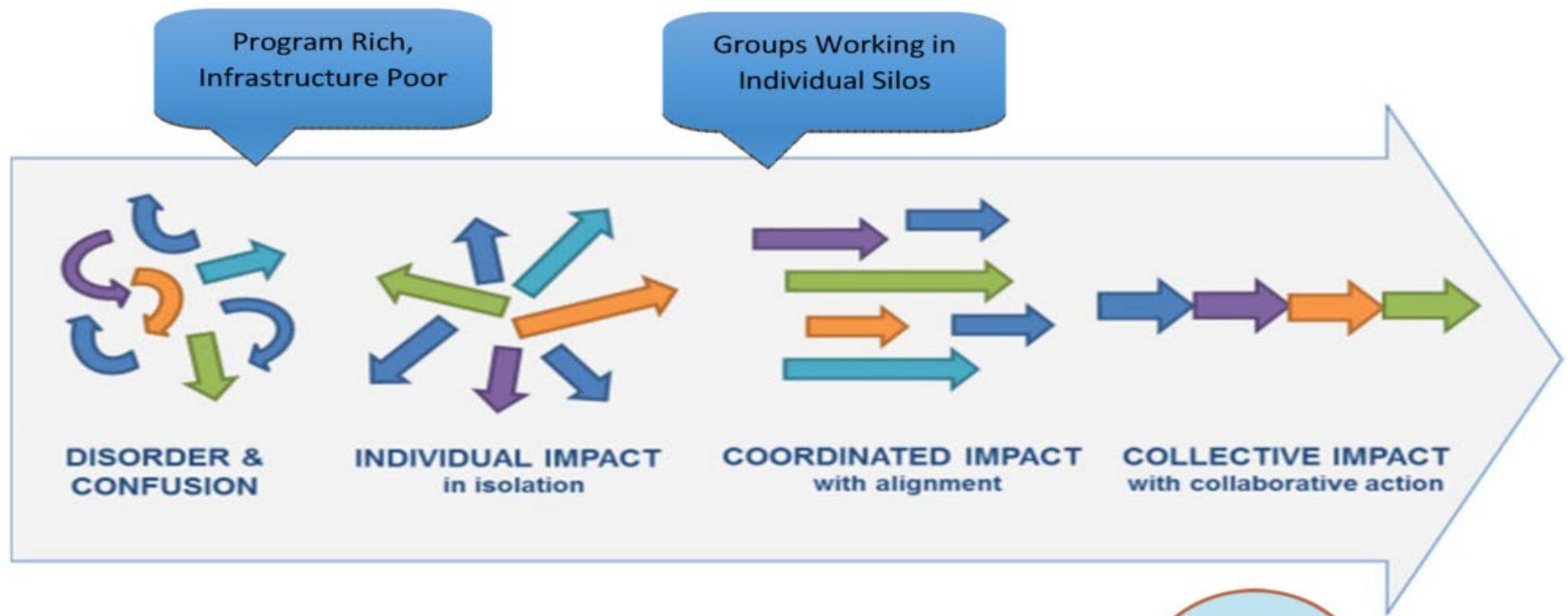
LANCASTER'S WIP GOALS

- Lancaster needs to **reduce 11 million pounds** of nitrogen.
- 71% of current nitrogen comes from agricultural practices.
 - 74% of that nitrogen is manure.



Lancaster Conservation Foundation

Clean Water Partners



Spotted Lanternfly - *Lycorma delicatula*



Spotted Lanternfly's Life Stages



E. Swackhamer



PA Department of Agriculture



PA Department of Agriculture



PA Department of Agriculture



PA Department of Agriculture

- A. Egg masses
- B. Early nymph
- C. Late nymph
- D. Adult, wings closed
- E. Adult, wings open



Spotted Lanternfly



Valued Partners



Lancaster County Conservation District

2020 County Statistics & Services

Growing Population

- 548,000 People
 - 211,000 homes



Lancaster County Conservation District



2020 County Statistics & Services

Growing and Diverse Population

- 548,000 People
 - 211,000 homes
- 47,876 Businesses
- Numerous Parks & Recreation
 - County Parks, State Parks, Community Parks, Amusement Parks, Open Space Preserves.
 - Rail trails, Watersports,
- Nearly 1,000 farms preserved



Lancaster County Conservation District



- County Support – Commissioner’s Allocation
- Fundraising & Donations – Tree sale, Envirothon, etc...
- Fees – E&S Plan Review, Educational programs, etc...
- Federal & State Agreements
- Grants & Agreements – 16 Active

2020 Budget (projected)

\$4,433,000.



Lancaster County Conservation District



| | |
|---|---------------------|
| - County Support – Commissioner’s Allocation | \$270,000. |
| - Fundraising & Donations – Tree sale, Envirothon, etc... | 41,550. |
| - Fees – E&S Plan Review, Educational programs, etc... | 584,225. |
| - Federal & State Agreements | 1,873,122. |
| - Grants & Agreements – 16 Active | 1,664,103. |
| 2020 Budget (projected) | \$4,433,000. |



Lancaster County Conservation District



Requested County Investment for 2020

- Commissioner's Allocation \$270,000
- County's Population – 548,000
- Cost - \$0.49 per County resident

ROI

- Budget for 2020 \$4,433,000.
- LCCD generates about \$16.00 - for every \$1.00 received from the County.



Lancaster County Conservation District

Requested County Investment for 2020

- Commissioner's Allocation \$270,000
- Cost - \$0.49 per County resident



ROI

- Economic stimulation (\$16 to \$1)
- Targeted efforts to improve local stream health.
- Technical & Financial assistance to the Ag community.
- Supporting Municipality and Ag communities to meet DEP & EPA goals and objectives.
- Proactive interfacing with DEP & EPA regarding compliance issues.



Lancaster County Conservation District

- **Leadership**
- ***Ownership & Responsibility***
- **LEGACY**

